



URBAN DRAWING EXPEDITIONS TYPICAL SCHEDULE

Time	Activity
10.00am	Children arrive @ Sketch & Scoot HQ and register
10.10am	Walk to train station
	Catch train (+tube if applicable) to location
10.30am	<i>Travel time</i>
10.45am	<i>Travel time</i>
11.00am	Sketch Stop 1
11.15am	Scoot to next sketch stop
11.30am	Sketch Stop 2
11.45am	Scoot to next sketch stop
12.00pm	Sketch Stop 3
12.15pm	Scoot to lunch spot
12.30pm	LUNCH BREAK
12.45pm	LUNCH BREAK
1.15pm	Scoot to next sketch stop
1.30pm	Sketch Stop 4
1.45pm	Scoot to next sketch stop
2.00pm	Sketch Stop 5
2.15pm	Scoot to train station
2.30pm	<i>Travel time</i>
2.45pm	<i>Travel time</i>
3.00pm	The Sketch and Scoot Gallery
3.30pm	Children are collected from Sketch & Scoot HQ

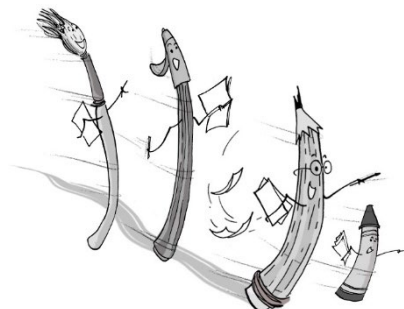




ILLUSTRATION EXPLORATIONS TYPICAL SCHEDULE

Time	Activity
10.00am	Children arrive @ Sketch & Scoot HQ and register
10:05PM	Introductions
10:10PM	Group warm up
10:30PM	Investigating comic strips
11:00PM	BREAK TIME
11:10PM	Introducing storytelling
11:30PM	Copying comics
12:00PM	LUNCH BREAK Take them to the park or play in garden (weather permitting) / Wet Play - DVD of cartoons, read comics, board games
1:00PM	Group warm up
1:20PM	Creating characters
2.00PM	Comic composition/layout (PART 1)
2:20PM	BREAK TIME
2:30PM	Comic composition/layout (PART 2)
3:00PM	The Sketch & Scoot Gallery
3.30PM	Children are collected from Sketch & Scoot HQ

